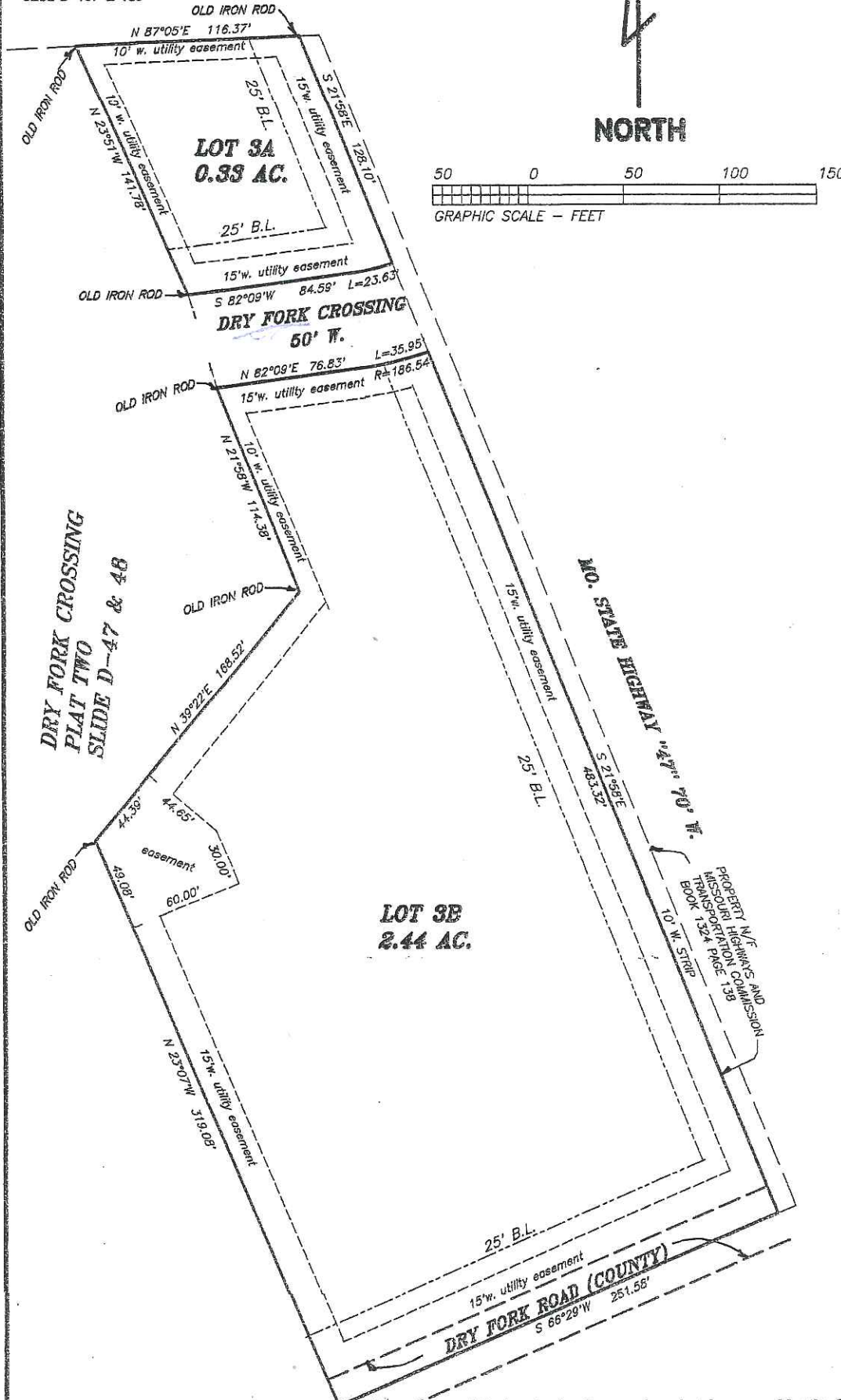


WARREN COUNTY, MO.

OAK RIDGE ESTATES
SLIDE B-137 & 138

The results of said survey and boundary adjust

Surveyed: September, 2005 By: Larry



THE UNDERSIGNED OWNERS of the tract of land shown on the Surveyor's Certificate, has caused the same to be adjusted in the manner shown on this Boundary Adjustment Plat for "LOTS 3A & 3B DRY FORK CROSSING PLAT TWO".

This plat is subject to conditions, restrictions, and covenants, as shown on the plat filed with the Recorder of Deeds for Warren County, Missouri.

IN WITNESS WHEREOF, the OAK RIDGE ESTATES, L.L.C., a Missouri Limited Liability Company has caused these presents to be signed and sealed this October, 2005.

Eileen Sanker
Member
Eileen Sanker

Larry P. Bade
Member
Larry P. Bade

STATE OF MISSOURI)
COUNTY OF WARREN) S.S.

On this 5th day of October, 2005, EILEEN SANKER and LARRY P. BADE, to me known and known to me, executed the foregoing instrument, and who are the owners of the OAK RIDGE ESTATES, L.L.C., a Missouri Limited Liability Company, acknowledged that they executed the same for the purposes and consideration therein expressed.

IN WITNESS WHEREOF, I have hereunto set my hand and year last above written.

My Term Expires: 10-06-07 By: Mary E. Frye

MARY E. FRYE
Notary Public-Notary Seal
State of Missouri
Montgomery County
My Commission Expires Oct 6, 2007

STATE OF MISSOURI)
COUNTY OF WARREN) S.S.

I, the undersigned, Ex-officio Notary Public, in and for the County of Warren, Missouri, do hereby certify that the foregoing instrument of writing was executed by the parties named therein at the place and time above stated, and the same is true and correct.

WITNESS MY HAND and OFFICE this 5th day of October, 2005.
By: Mary E. Frye
DEPUTY RECORDER

This drawing has been reviewed and approved by the City of Warrenton Department of Planning and Zoning on September 29, 2005. The purpose of this plat is to adjust boundaries between adjoining properties. No additional lots are created and the original lots are not reduced below the minimum size required in the Zoning Ordinance or Subdivision Ordinance.

By: Jim Shores
Jim Shores, Mayor

Attest: Judith Minchak
City Clerk

Larry P. Bade
Professional Surveyor
PHONE (636) 456-
SURVEYED BY
DRAWN BY:
LARRY