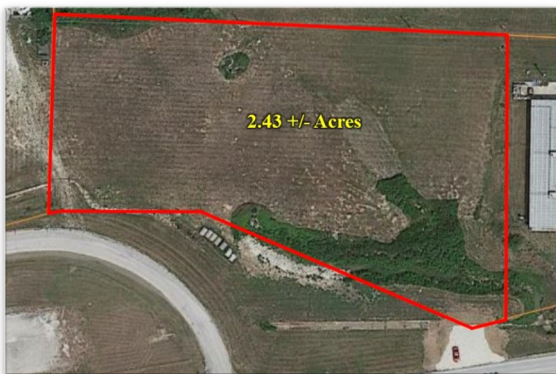


# FOR SALE

## IDEAL COMMERCIAL LOCATION



**2.43+/- ACRES**  
**PRICE: \$199,900**

### PROPERTY FEATURES:

- Mostly Open Acreage
- Great Building Site
- Public sewer available
- Ideal Commercial Location
- High Traffic Area, Easy Access
- N. Service Road Frontage
- Interstate 70 Visibility
- Taxes \$371 for 2019

### NORTH SERVICE ROAD, WRIGHT CITY

**Directions:** 70 to the second Wright City exit #199. Turn right and make an immediate right onto the Northeast Service Road. Continue approximately 1/2 mile to the property on the left. **Watch for the Westbound Real Estate sign.**



For more information contact: **Phil Reid at 314-486-8642**