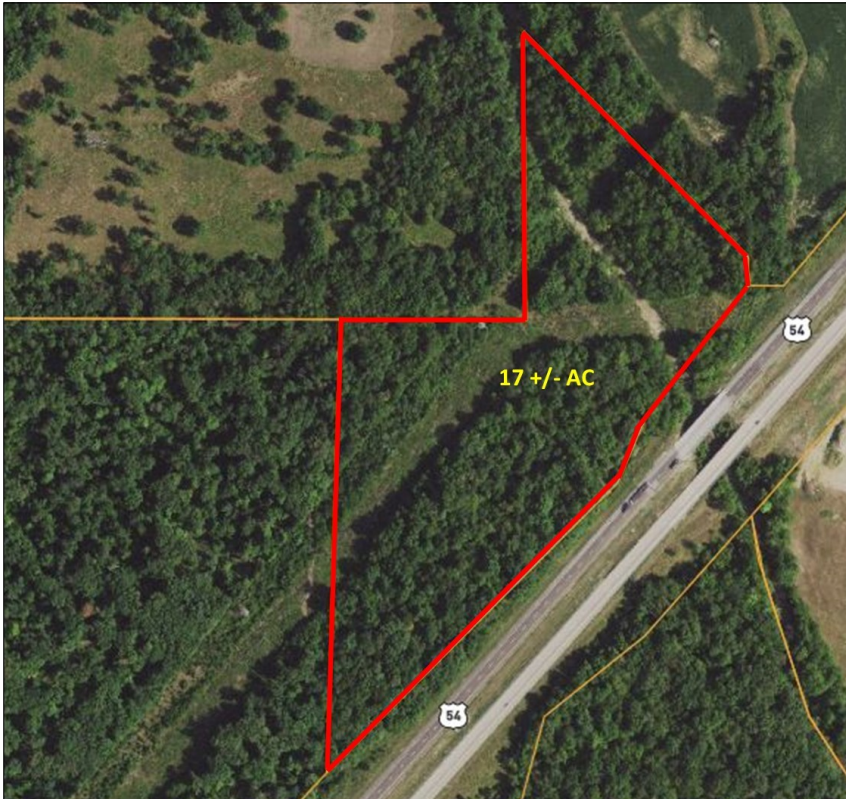


FOR SALE

17+/- ACRES

\$3,000/AC

STATE HWY 54, FULTON, MISSOURI



Showing flood plain



PROPERTY FEATURES:

- Beautiful wooded acreage in Fulton
- Fronts on Highway 54
- Great property for recreation
- Landlocked & partly in flood plain
- Fulton 58 School District

Directions: Take Highway 54 west from Fulton towards Jefferson City. After approximately 5 miles (right after crossing Middle River), property will be on the right. No direct access via highway, property is landlocked. **Watch for the Westbound Real Estate sign.**

For more information contact: **Phil Reid at 314-486-8642**