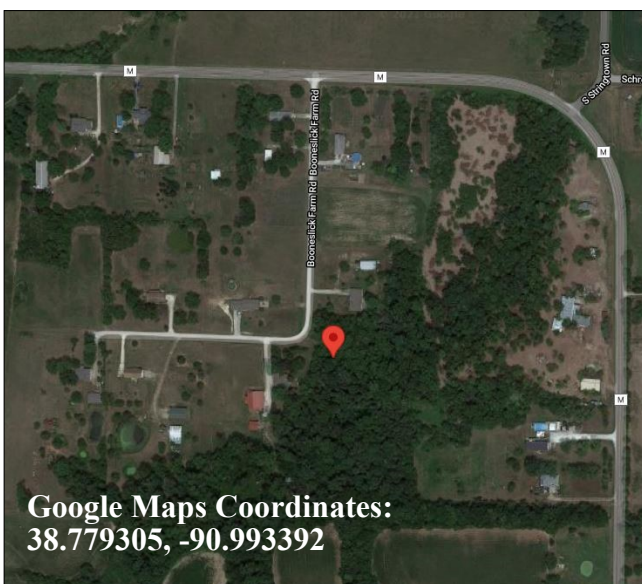


# FOR SALE

**5.717 ACRES**

**\$74,360**

**BOONESLICK FARM ROAD, WRIGHT CITY**



Google Maps Coordinates:  
38.779305, -90.993392

## PROPERTY FEATURES:

- Wooded acreage
- Ideal building site for custom home
- Lays great
- Right off of Highway M
- Close to a beautiful winery
- Located in Wright City School District

**Directions:** Take Hwy 70 west to exit #203 to left on Hwy W. Turn right onto Veterans Memorial Parkway, then left on Hwy T. After 3 miles, turn right onto Hwy OO. After 1.5 miles, turn right onto Hwy M, then left onto Booneslick Farm Road. Property on left. **Watch for the Westbound Real Estate sign.**

For more information contact: **Phil Reid at 314-486-8642**