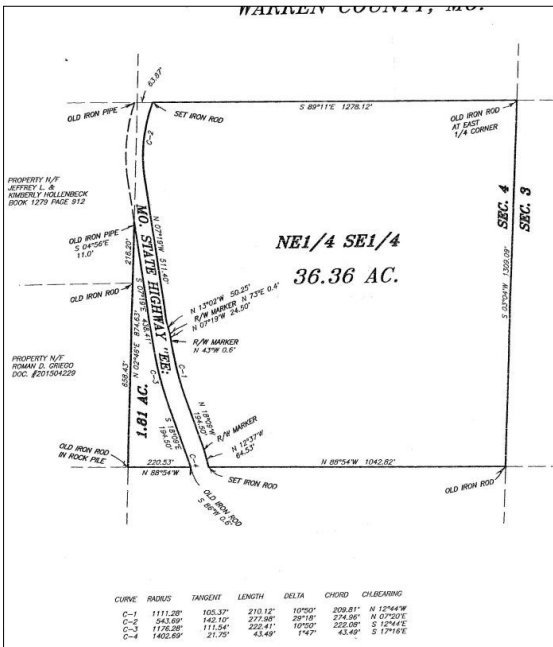


FOR SALE

36.36 ACRES ~ STATE HWY EE



36.36 ACRES
PRICE: \$309,060

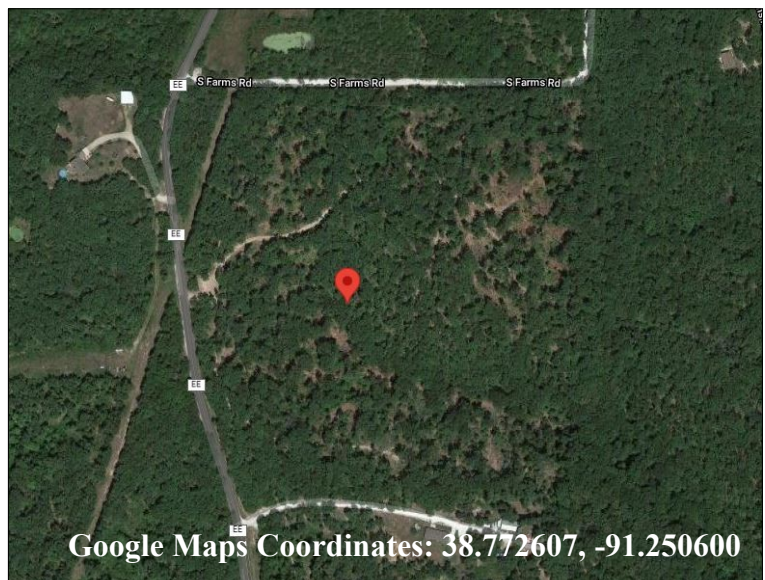
PROPERTY FEATURES:

- Quiet, country acreage
- Gravel road
- Great home site
- Front portion of acreage has been cleaned up
- Nice potential two-acre lake site
- Seller willing to divide

**Agent Owned.*

STATE HWY EE, WARRENTON, MO

Directions: Take Hwy 70 west to exit #188 to left on State Hwy B. After 1.6 miles, continue straight onto State Hwy EE. After 4.2 miles, property will be on your left - **Watch for Westbound Real Estate signs!**



For more information contact: **Phil Reid at 314-486-8642**