

FOR SALE

OPEN ACREAGE GREAT FOR BUILDING!



3 ACRES
PRICE: \$58,000

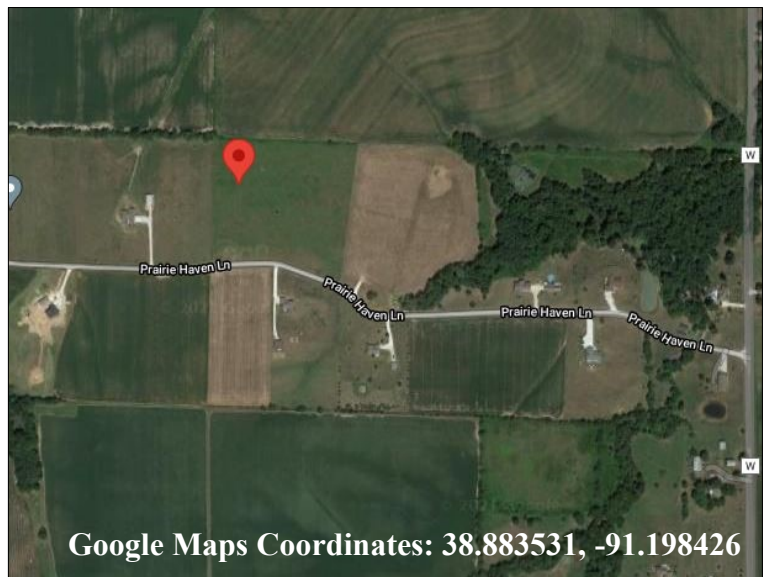
PROPERTY FEATURES:

- Great piece of level, open ground with electric available
- Nice for custom building
- Some fencing, potential for horse(s)
- Warren County School District
- Deed restrictions may apply
- More acreage available for sale

**Property will adjoin future solar farm*

PRAIRIE HAVEN LN, WARRENTON, MO 63383

Directions: Take Highway 70 west to exit #193 to right on Highway 47. Make a left onto N Service Road, after 1 mile, turn right onto State Highway W. After 5 miles, turn left onto Prairie Haven Lane, property on the right. **Watch for the Westbound Real Estate sign.**



For more information contact: **Phil Reid at 314-486-8642**