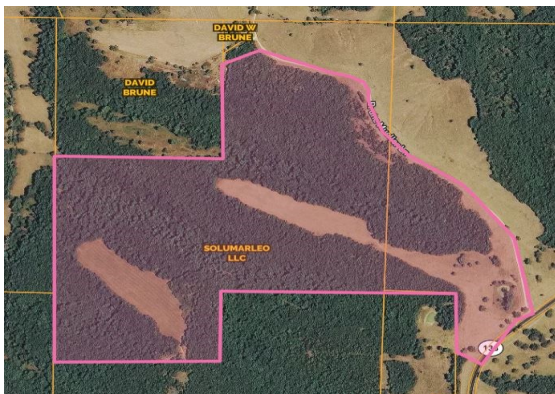


# FOR SALE

## OSAGE COUNTY RANCH



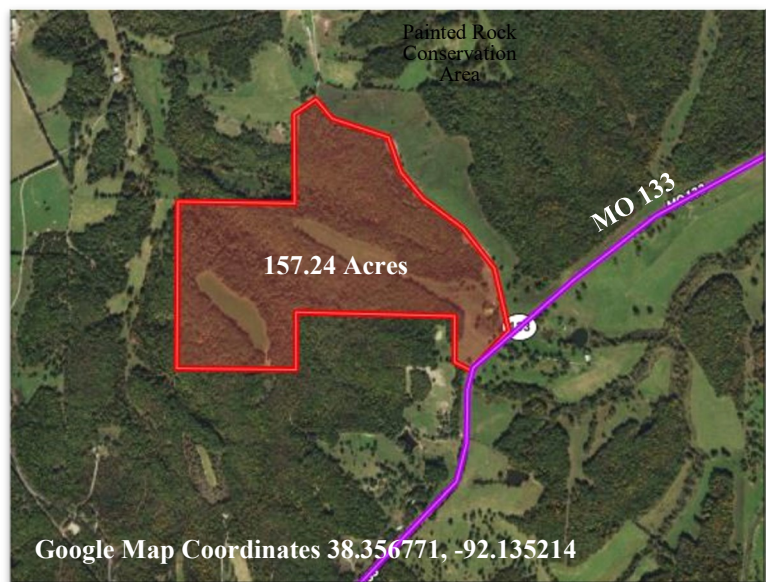
**157.24 ACRES**  
**PRICE: \$3,850 PER ACRE**

### PROPERTY FEATURES:

- Sought After Westphalia School District
- Great Homes Sites with Spectacular Views
- Ideal for Hunting and Recreation
- Close to Painted Rock Conservation Area
- State Hwy 133 frontage
- Hidden Meadows, Pasture and Woods

**STATE HWY 133, META, MO 65058**  
*Corner of 133 and Brune Mueller Lane*

**Directions:** From Jefferson City take Hwy 50 east 11.3 miles to Hwy 63, take Hwy 63 2.7 miles to Hwy 133. Turn right on 133 for 11 miles to property on corner of Brune Mueller Lane and Hwy 133. Property is 2 miles west of Painted Rock Conservation Area. **Watch for the Westbound Real Estate sign.**



For more information contact: **Phil Reid at 314-486-8642**