

# FOR SALE

## 8.3+/- ACRES FOR CUSTOM BUILDING



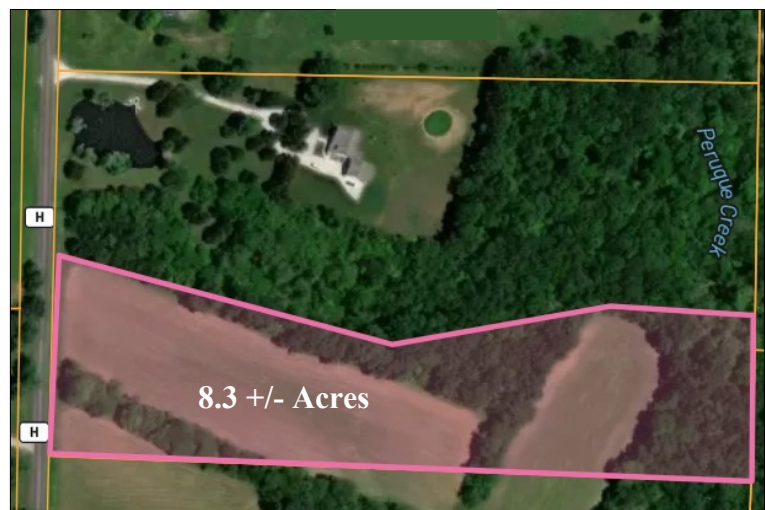
**8.3 +/- ACRES**  
**PRICE: \$198,000**

### PROPERTY FEATURES:

- Nice mix of open and wooded acreage with plenty of privacy
- Picturesque country setting and beautiful sunset views
- Right off of Highway H blacktop
- Quick, easy access to Highway 70
- Restrictions to be recorded, survey to govern

### STATE HWY H, WRIGHT CITY, MO 63390

**Directions:** Hwy 70 west to Wright City exit #199 to left onto Wildcat Drive. Turn right onto Veterans Memorial Parkway, then left onto Hwy H. After approximately 1.8 miles, property will be on your left. **Watch for the Westbound Real Estate sign.**



Google Maps Coordinates: 38.809902, -91.054351

For more information contact: **Phil Reid at 314-486-8642**