

YOUR DREAM OF COUNTRY LIVING COME TRUE!



## 3 Bedroom Home on 3 Acres

3 BED/2.5 BATH ♦ 2,174 sq ft Liv Area ♦ \$519,900

20301 Springview Ct, Marthasville 63357

Scan the QR code for Google Map Directions to Subdivision. ➡



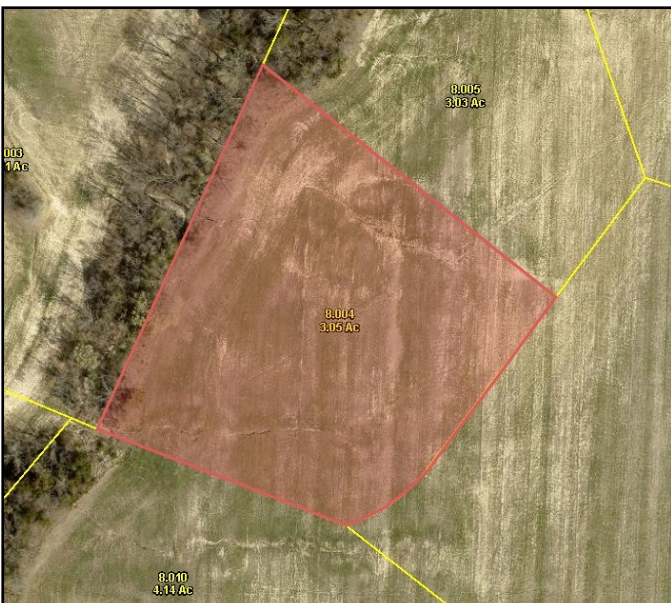
Gorgeous country setting surrounds this newly built 3 bedroom 2.5 bed ranch located between Foristell and Marthasville. The open kitchen and dining area flows into a great room boasting a remote controlled gas fireplace that overlooks 3 acres backing to woods with a small creek in the back. The kitchen has a large center quartz island with stainless steel appliances. Walk out the dining and kitchen area onto the covered deck overlooking a large concrete patio below and wooded backdrop beyond. Other rooms include a main floor office/craft room, huge master walk-in closet with shelving, pantry with a rustic wooden door harking back to the Boone Family (so its rumored), mud room with adjoining half bath and laundry room. Beautiful commercial grade laminate wood flooring will last years to come. The walkout basement has a framed wall with windows ready to finish out into additional bedrooms and living space. A 25 ft deep 3 car drywalled and insulated garage will allow plenty of room for large vehicles. Much more to offer!



**Phil Reid**

(314) 486-8642

phil@landtoday.com



## FEATURES

- ◆ Ranch Style Home
- ◆ Beautiful Open Acreage
- ◆ Large Eat-in Kitchen
- ◆ Walk in Pantry
- ◆ Quartz Countertops
- ◆ Main Floor Laundry
- ◆ Gas Fireplace
- ◆ Walkout Lower Level
- ◆ 3 Car Garage
- ◆ Covered Deck
- ◆ Craft Room
- ◆ 9' Ceilings throughout
- ◆ Wright City R-II School District

**Directions:** 70 to Foristell Exit, S on Hwy T for 5 miles to Rt on SR M for 1.5 miles. Lt on SR O for 3.5 miles to sub. on left. From Marthasville-N on 47 to Rt on SR O 6.7 miles to Sign on Rt. Watch for the Westbound Real Estate sign.

