



Custom Log Home on 3 Acres

3 BED / 3 BATH ◆ 2,119 sq ft Liv Area ◆ \$415,000

27254 N. Hearth Vlg, Warrenton, MO 63383



Looking for a REAL LOG HOME next to a state forest? This is the real deal and not your typical Lincoln Log home but one made with real hand hewed thick logs and beams that emulated the cozy cabin feel along with all the modern conveniences. Features include a full masonry wood burning fireplace, wood floors throughout, full length front and back porches, granite countertops, stainless steel appliances, detached 2 car garage/workshop, blacktop frontage all in a beautiful country setting right across from Little Lost Creek State Forest. Other features include a 2 story loft with an open stairway leading up to a recreational area, large bedroom with additional office space and a full bathroom. The walkout basement has a separate garage door to park all your toys and outdoor equipment. The 3 acre plus lot has a fenced backyard, partly open and wooded with plenty of wildlife. Just 6.5 miles south of 70 and an easy drive to Hermann and surrounding wine country.

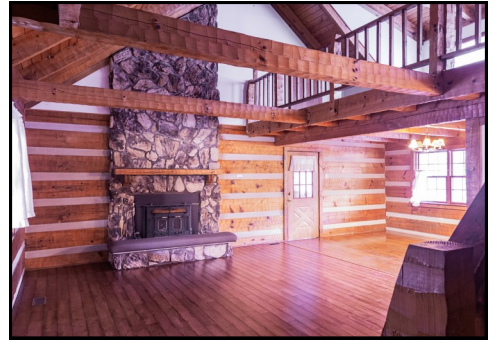
Broker | Owner



Phil Reid

(314) 486-8642

phil@landtoday.com



FEATURES

- ◆ 3 Acres
- ◆ 2 Car Detached Garage
- ◆ Fenced Yard
- ◆ Shed
- ◆ Stone Wood Burning Fireplace
- ◆ Full Bathroom in Basement
- ◆ Workshop in LL
- ◆ Covered Front Porch
- ◆ Hardwood Floors
- ◆ Spacious Loft Area
- ◆ Open Floor Plan
- ◆ Custom Cabinetry
- ◆ Den/Rec Room
- ◆ Covered Back Deck
- ◆ Custom Woodwork
- ◆ Main-Floor Laundry

Directions: 70 West to Truxton exit 188, left on Hwy A then a right on Hwy B for 4.8 miles to right on N. Hearth Village, home on the left.

