

10328 State Highway 00, Wright City



\$1,400,000

Private Estate on 37.47 Acres w/ 4 Acre Lake 4 BD Home, 1 BD Outbuilding, Horse Barn, Inground Pool



Scan here for a virtual tour of the property



➤➤➤ MAIN HOME - 4 BD, 3.5 BA Over 4,000 sq ft of living space

Key features include: 2-story entry foyer, spacious kitchen, w/ built-in steam table in kitchen island, separate dining & large family room w/ marble fireplace & built-in bookcases, sunroom leading to back patio, master suite w/ luxury shower, finished 3rd floor multi-purpose room w/ bedroom & bathroom, and an aggregate patio w/ pavilion, outdoor stone fireplace and an inground pool.

OUTBUILDING - 1 BD, 1 BA <<<

40 x 60: living quarters & storage

Outbuilding on property is the ideal set-up for in-law/caretaker quarters - key features include: additional living quarters with one bedroom and one bathroom, a loft and additional space for storage. Could be the ultimate "man cave" as well, with the perfect place to store your recreational vehicles & equipment.



➤➤➤ HORSE BARN WITH LEAN-TO

20 x 20 horse barn, 20 x 14 lean-to

Horse barn is equipped with 2 sliding gate stalls, electric, plenty of built-in shelving & hooks for storage and a gate out to some fenced pasture. Plus, the lean-to is a great covered spot to store your horse trailer...an ideal set-up for horse lovers!

All this overlooking the GORGEOUS stocked lake!!!



Phil Reid

314-486-8642

Phil@landtoday.com



>>> 2 STORY HOME - 4 BD, 3.5 BA - OVER 4,000 SQ FT

Your Own Private Oasis...



Gorgeous views overlooking your private lake



Four acre stocked lake ideal for fishing and canoeing



3 car side entry garage



Sunroom & covered front porch



Gorgeous country setting!

...Come On Inside

A stunning 2 story country estate with so many elegant features to enjoy! From custom millwork to top notch flooring and plenty of windows throughout allowing natural light, this home truly has it all.



Front entry foyer from covered porch



Beautiful columns and flooring



Elegant formal dining room



Family room with wall of windows



Marble fireplace w/ built-in bookshelves



Sunroom with ample natural light



Gourmet kitchen with custom cabinets



Center island with built-in steam table



Spacious eating area off kitchen

Relax Upstairs...



Cozy loft area upstairs



Primary bath suite with double vanity



Elegant tile walk-in shower



Bedroom with gorgeous lake view



Spacious bedroom w/ oversized closet



Third floor additional bedroom

...Unwind Downstairs



Fully finished basement with large family area, additional kitchen nook, and plenty of room for recreation/game tables. An additional bedroom & lower-level bath complete the finished area, plus, a large unfinished laundry/storage area.

»»» OUTBUILDING WITH LIVING QUARTERS - 1 BD, 1 BA

A Caretaker's Dream Suite...



This outbuilding on the property is the perfect set-up for extended family. Additional living quarters includes a family area, large kitchenette, bedroom & bathroom. Plus, a large storage area for recreational vehicles & equipment.



Elegant additional living quarters



Kitchenette with custom cabinetry



Cozy living room



Spacious bedroom w/ lake view



Overhead door in storage shed



Plenty of room for equipment

Two Stall Horse Barn <<<



Horse barn w/ fenced pasture



Two stalls for horses



Shelving & hooks for storage

37+/- GORGEOUS COUNTRY ACRES FOR YOU TO ENJOY! <<<

...Truly a Private Country Escape



Overhead view of home, outbuilding, barn & lake



Enchanting drive along dam of lake



Pasture & level acreage



Nice level drive leading to property



Classic white fencing on property

Lake & Inground Pool to Enjoy..



Pavilion with outdoor stone fireplace



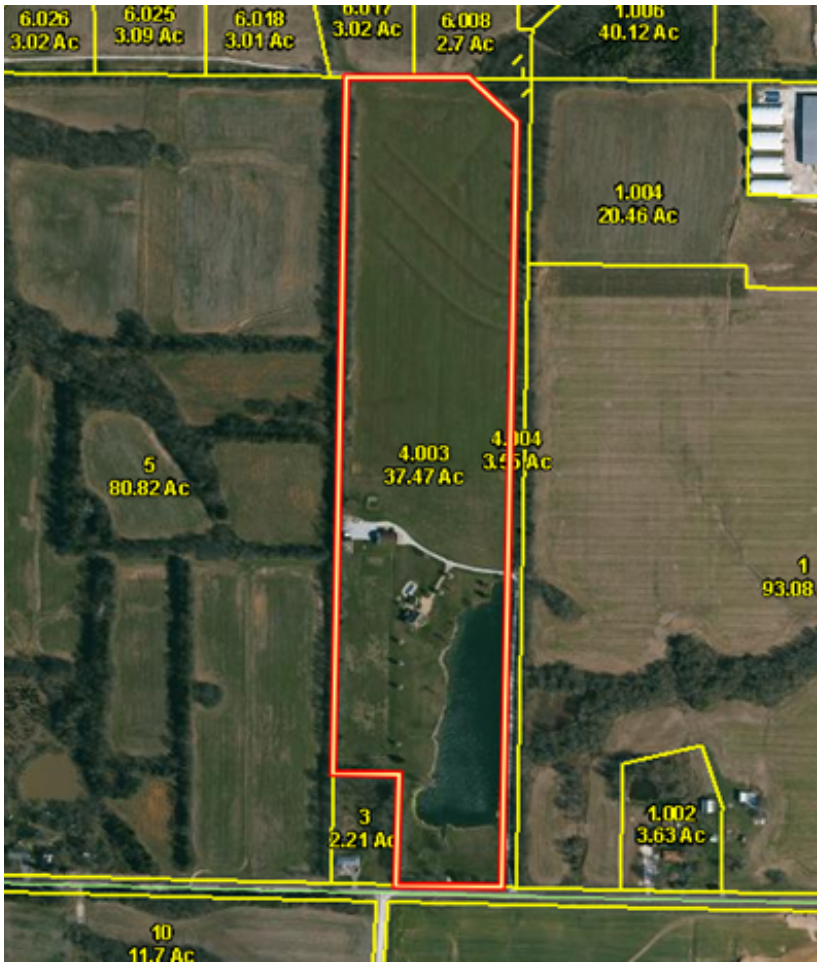
Private luxury inground pool



With a four-acre private stocked lake and an inviting inground pool to enjoy, you'll be soaking in the great outdoors in your own beautiful country setting! The covered outdoor pavilion adjacent to the pool is perfect for gatherings with an exquisite stone fireplace to cozy up to in the cool evenings. With such an ideal setting, this truly is country living at its best!

PROPERTY FEATURES <<<

...An Ideal Country Setting



37.47 Level Acres - Ideal set up for horses, pasture & farming

Features Galore...

- Luxury vinyl & ceramic tile flooring
- Custom millwork
- Built-in bookshelves
- Separate formal dining room
- Eat-in area off kitchen
- Center island w/ breakfast bar & 3-bin steam table
- Under cabinet lighting
- Huge walk-in pantry
- Granite countertops
- Marble gas fireplace
- Gorgeous master suite w/ walk-in ceramic tile shower in bath
- Finished lower level w/ kitchenette
- Sunroom/lounge w/ sliding doors
- Unfinished storage area
- Covered front porch
- Inground heated pool
- Covered seating area with outdoor stone fireplace adjacent to pool
- 40 x 60 outbuilding w/ full living quarters, ideal caretaker's suite
- Concrete floor, overhead door, storage for recreational vehicles
- Two-stall horse barn
- Fenced horse pasture
- 4-acre stocked private lake
- Open fields/pasture
- Tranquil driveway along dam of lake
- Wright City School District

Directions: I-70 W to Foristell exit 203, take Hwy T South for 3 miles to right on Hwy OO. approx .3 miles to property on the right. Look for the white fence and sign. Driveway crosses dam of lake. Appointment Only.

Call Phil today at 314-486-8642 for your own private showing of this one-of-a-kind country estate!

