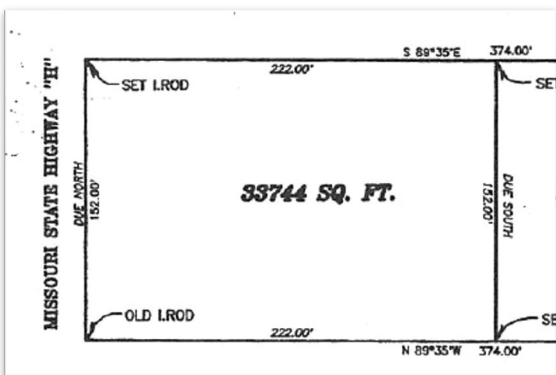


FOR SALE

FRONTAGE ON HWY H!



0.77 +/- ACRES
PRICE: \$64,900

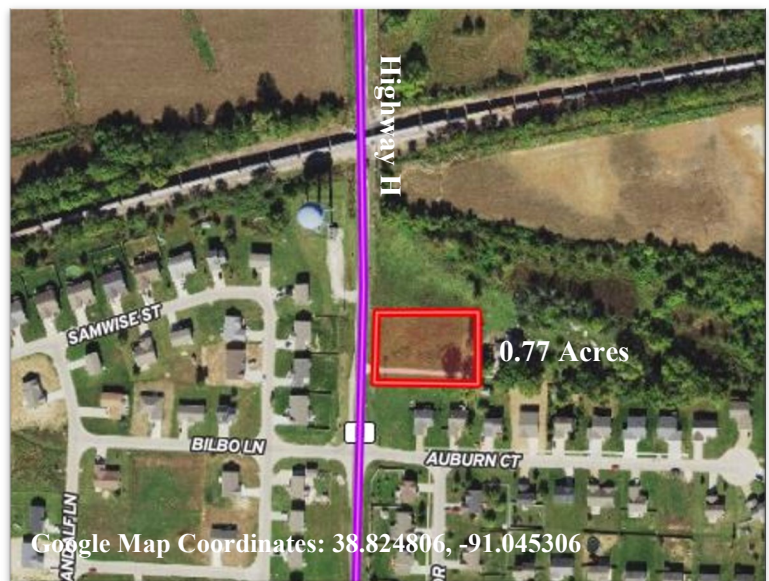
PROPERTY FEATURES:

- Commercial property, Zoned C-4
- Open ground
- Great laying parcel of land
- Many possibilities
- Close to I-70
- Taxes \$29 for 2023
- Wright City School District

**Agent owned*

HIGHWAY H, WRIGHT CITY, MO 63390

Directions: From exit 199 in Wright City take the South Service Road west a short distance to Hwy H. Turn left on Hwy H and proceed to the property on the left. **Watch for the Westbound Real Estate sign.**



For more information contact: **Phil Reid at 314-486-8642**