



WESTBOUND REAL ESTATE

21 N. Stringtown Rd, Foristell, MO 63348

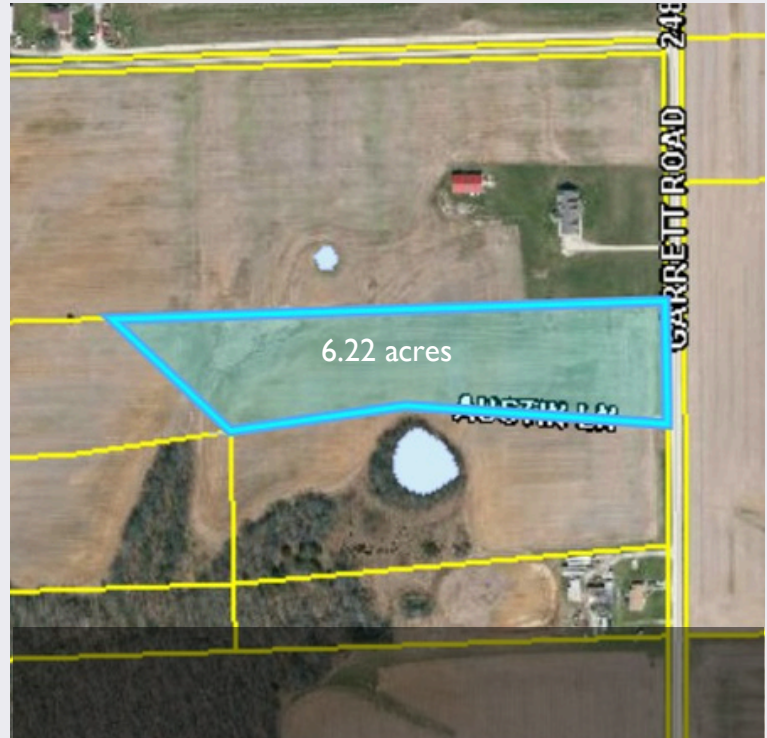
6.22 ACRES

\$14,000 /ac

Lot 1 - Still Meadows
Garrett Rd, Jonesburg, MO

Google Coordinates:
38.89183093586532, -91.32052780283679

Beautiful Home Site with County Road Frontage



ABOUT THIS PROPERTY

BARNDOMINIUMS ALLOWED!!! Beautiful home site with county road frontage. Land lays mostly level & open for a nice building site with room for horses. Ideal investment to build your dream home in newly established Still Meadows. Great location, only 5-6 minutes from I-70 for an easy commute to Wentzville for shopping and restaurants. Very few restrictions! Road maintenance assessment will apply.

DIRECTIONS

From Jonesburg Exit go north on Oak Hall a short distance to left on the North Service Rd for .5 miles, right on Hwy E for 1.8 miles, left on Van Horn for .5 miles, right on Garrett Road .5 miles to property on left. Use Google Coordinates for GPS, no address established.

PROPERTY FEATURES

- ✓ Suitable for horses
- ✓ County road frontage
- ✓ Mostly level acreage
- ✓ Newer Fencing
- ✓ Montgomery County RII School District

PHIL REID
Owner/Broker



www.LandToday.com

314-486-8642
phil@landtoday.com