



WESTBOUND REAL ESTATE

21 N. Stringtown Rd, Foristell, MO 63348

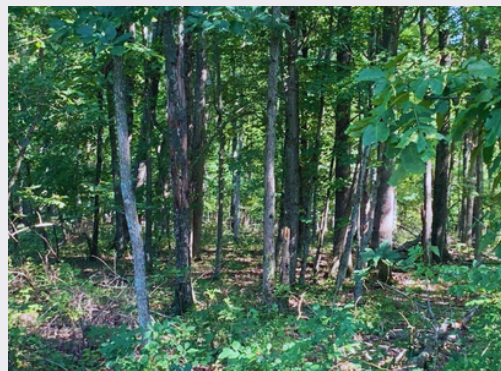
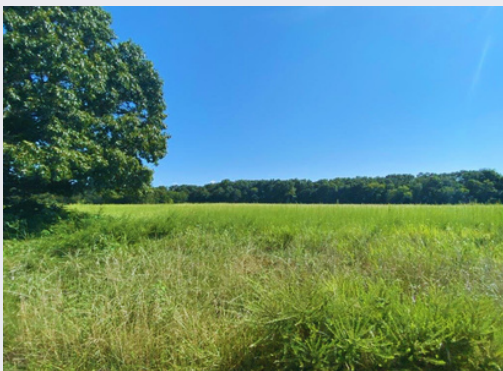
25 ACRES

\$550,000

Polston Lane
Marthasville, MO 63357

Open & Wooded Acreage

Google Coordinates:
38.705924302980506, -91.03271664713647



ABOUT THIS PROPERTY

Conveniently located between Foristell & Marthasville, you will love the country setting this parcel has to offer. Level to gently rolling ground with approximately 7.5 acres open in the front and 17.5 acres of lush woods in the back. This property has many trails throughout and lays great for several home sites. Several potential lake and ponds sites also compliment this property. Great for hunting, livestock, weekend retreat, recreation or future development.

DIRECTIONS

I-70 West to exit 203 Foristell Exit, left over overpass, right on Veterans Mem Pkwy, left on T for 5.1 miles to a right on Hwy M for 1.4 miles, slight left on Hwy O for 4.3 miles. Polston Ln on left. Property on right, look for sign.

PROPERTY FEATURES

- ✔ Level to gently rolling
- ✔ Trails throughout
- ✔ Potential lake/pond sites
- ✔ Great for investment/future development
- ✔ Wright City R-II Schools

PHIL REID
Owner/Broker



www.LandToday.com

314-486-8642
phil@landtoday.com