



WESTBOUND REAL ESTATE, LLC

21 N. Stringtown Rd, Foristell, MO 63348

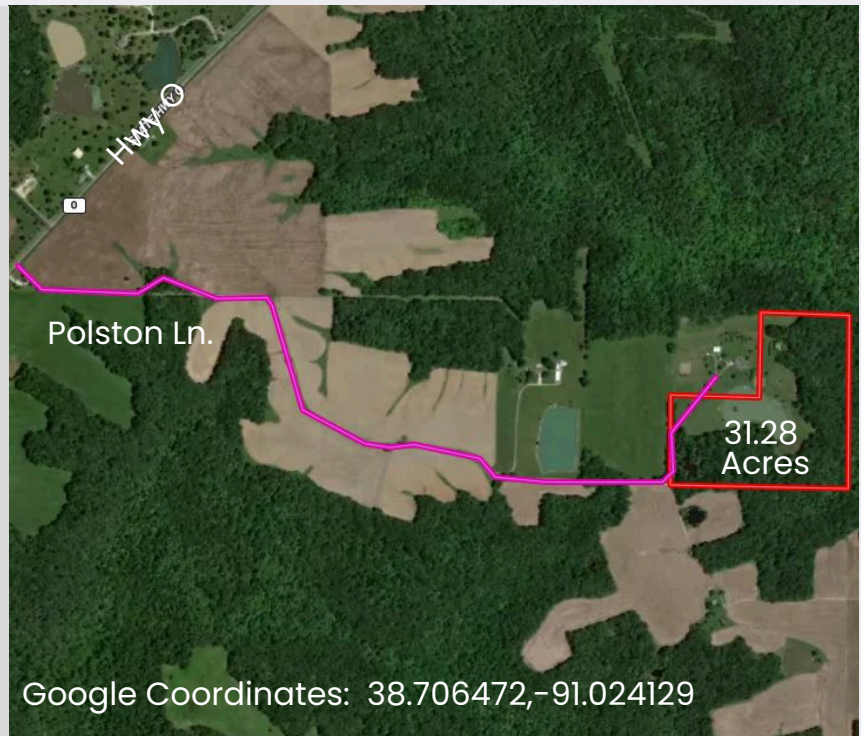
31.28 ACRES

\$19,500 /ac

Polston Lane

Marthasville, MO 63357

**Beautiful Country Acreage
with Shared 2.5 Ac Lake!!!**



ABOUT THIS PROPERTY

Beautiful country setting with a mix of open & wooded acreage, a shared 2.5 acre lake and a small pond! This property has plenty of potential building sites with gorgeous water views and nice flat wooded ridges. Just off Highway O between Foristell and Marthasville! Perfect opportunity to build your dream home with room for recreation or great investment for future development.

DIRECTIONS

Highway 70 West, take the Foristell exit to left to Hwy T to right on Hwy M. Turn left on Hwy O to Polston Lane on the left. After approximately 1.1 miles, turn onto the private drive on the left-watch for Westbound sign!

PROPERTY FEATURES

- ✓ Shared 2.5 Acre Lake
- ✓ Small Pond
- ✓ Electric Accessible
- ✓ Several great home sites
- ✓ Wright City RII Schools
- ✓ Taxes: \$48 for 2024

PHIL REID
Owner/Broker
314-486-8642



www.LandToday.com

Office: 636-456-5922
phil@landtoday.com