



# WESTBOUND REAL ESTATE, LLC

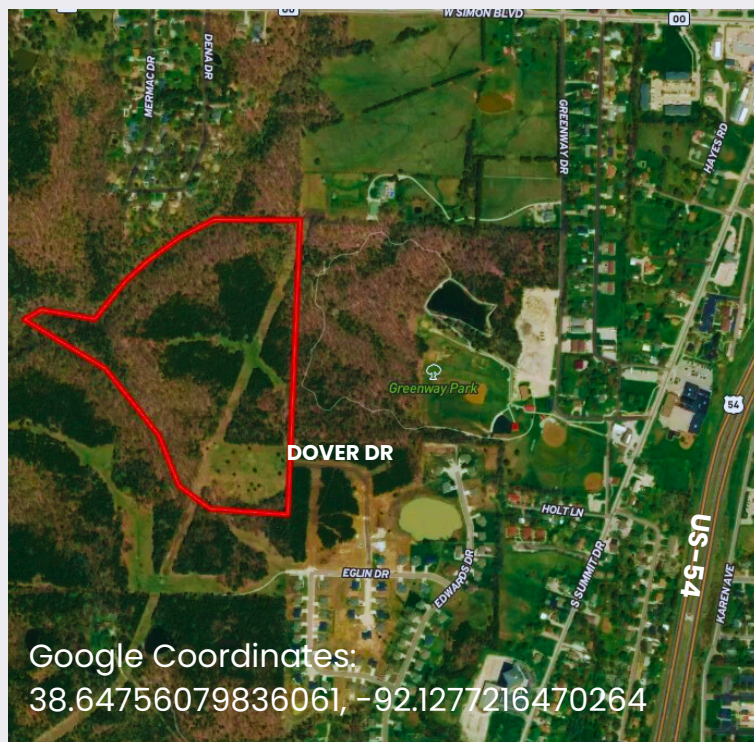
21 N. Stringtown Rd, Foristell, MO 63348

## Near Hwy 54 & Close to Jeff City

### 41.43 ACRES

### \$9,800 /ac

**Dover Drive  
Holts Summit, MO 65043**



### ABOUT THIS PROPERTY

**NEAR GREENWAY PARK-HIKING TRAILS & LAKE!!!**

Stunning gently rolling property features open meadows, pastures & scattered woods with marketable timber, cedar groves & seasonal creek. Ideal for building, hunting, or recreational use with access to water & sewer & sits just outside city limits. Only 7 miles from Jefferson City, you'll enjoy convenient access to shopping, dining, and amenities.

### DIRECTIONS

From Hwy 54 at the Center Street exit go west on Center Street, Right on Summit Dr, Left on Ellsworth Dr., Right on Edwards Dr., left on Eglin Dr., right on Dover Dr. to property. City street ends at property.

### PROPERTY FEATURES

- ✓ Recreation/Hunting Use
- ✓ Great for Building
- ✓ Water/Sewer Accessible
- ✓ Near Greenway Park
- ✓ 7 Miles from Jeff City
- ✓ Jefferson City Schools

**PHIL REID**  
Owner/Broker  
314-486-8642



[www.LandToday.com](http://www.LandToday.com)

Office: 636-456-5922  
[phil@landtoday.com](mailto:phil@landtoday.com)